

TERMINAL CITY CLUB

DRESS CODE & STYLE GUIDE

- Non-Uniform & Management -

As representatives of Terminal City Club, our personal presentation reflects the standards of excellence in hospitality that our members and guests expect.

If you have questions about this guide or need any clarification, don't hesitate to reach out to your Manager.

The Club reserves the right to define what is considered appropriate in terms of safety, appearance and etiquette.

NON-UNIFORM DRESS CODE

Business or business-casual attire that reflects professionalism, pride and polished presentation. Clothing must always be clean, pressed, and in good repair.

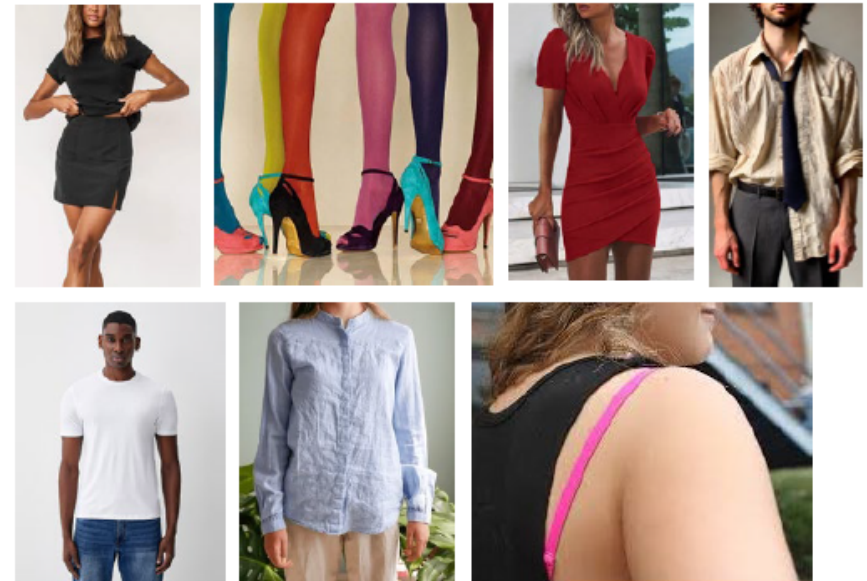
OUR STYLE

- Dress shirts, blouses, knit tops, sweaters, or blazers
- Dress pants, chinos, or skirts/dresses of knee length
- Conservative jewelry and accessories that complement the outfit
- Name tags must be worn and visible at all times



NOT OUR STYLE

- Casual, wrinkled or sloppy clothing
- T-shirts, tank tops, crop tops, halter tops, or sheer/low-cut blouses
- Hats, athletic wear, hoodies, or sweatpants
- Clothing with logos/slogans/graphics unrelated to the Club
- Lack of undergarments, sheer fabric, clothing that's too tight or revealing, visible bra straps/undergarments
- Clothing with logos, slogans, or graphics
- Skirts with revealing slits or mini skirts



FOOTWEAR

Footwear must always be closed-toe, clean, well-maintained, and appropriate for your role and setting, whether you are in Member Services, in the office or a Manager on the floor.

OUR STYLE

- Dress sneakers in a neutral tone are acceptable, given that they coordinate with your business attire. Sneakers must be free of visible logos or branding
- Dress shoes, loafers, flats, or ankle boots that complement business attire
- Moderate heel (3 inches maximum)
- Professional winter footwear when transitioning between outdoor and indoor spaces
- Neutral or coordinated colours such as black, brown, navy, or tan
- Socks must coordinate with shoes; white socks are not permitted



NOT OUR STYLE

- Flip-flops, slides, or beach sandals
- Runners, athletic shoes, or casual sneakers
- Flat sling-back dress shoes (the heel must be covered if wearing this type of shoe)
- Scuffed, dirty, or worn-out shoes
- Open-toe or strappy high-heel shoes that compromise safety or professionalism
- Flashy, glittered, or excessively embellished footwear
- Shoes that clash with business attire or detract from a polished, professional image

